

# Avira Security Management Center 2.6

Automatic import of computers in combination with the  
automatic product installation:

**Support**

April 2011



[www.avira.de](http://www.avira.de)

Errors in design and contents cannot be excluded  
© Avira GmbH

## **Automatic import of computers in combination with the automatic product installation:**

There is the possibility within the SMC to import workstations into the security environment either with the network environment, by a comma separated file or via Active Directory.

You can navigate to this function with a right click on *Security environment --> Synchronize --> Synchronize.*

### **Network environment:**

If imported to the import function via the network environment, all workstations will appear in a computer list.

Unwanted clients can be removed in this list.

### **Comma separated file:**

Create the list of computers with a text editor and save it in the system. The name of the text file (\*.txt) is arbitrary. The list must have the following structure:

Group, name, IP or network name

Floor \ Marketing, workstation 01, 192.168.146.1

Ground Floor, Reception, PC reception

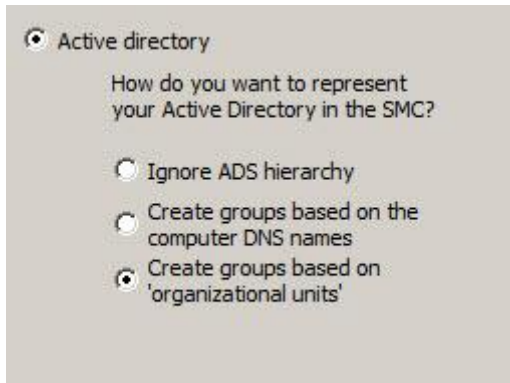
**Group:** Name of the group in the security environment, with relative path to the security environment, such as floor \ marketing

**Name:** Display name of the computer in the security environment

**IP:** IP address or name of the computer in the network

## Active Directory:

You can choose here from the following functions:



The screenshot shows a configuration window with a title bar. The main content area has a header "Active directory" with a selected radio button. Below it is the question "How do you want to represent your Active Directory in the SMC?". There are three radio button options: "Ignore ADS hierarchy", "Create groups based on the computer DNS names", and "Create groups based on 'organizational units'". The third option is selected.

All clients from the Active Directory are imported with the option **Ignore ADS hierarchy**. The structure, however, will be ignored and all clients and servers will be created directly below the security environment.

The group structure is generated according to the DNS name with the option **Create groups based on the computer DNS names**.

Example:

A computer is named *"Testclient.companygroup.local"*.

Thus, the group **"Local"** will be created below the security environment and below that a sub-group called **"companygroup"**. Below the group **"companygroup"** you can then find the computer **"testclient"**.

With the option **"create groups based on 'organizational units'"** all PCs are imported according to their domains/Active Directory structure below the security environment.

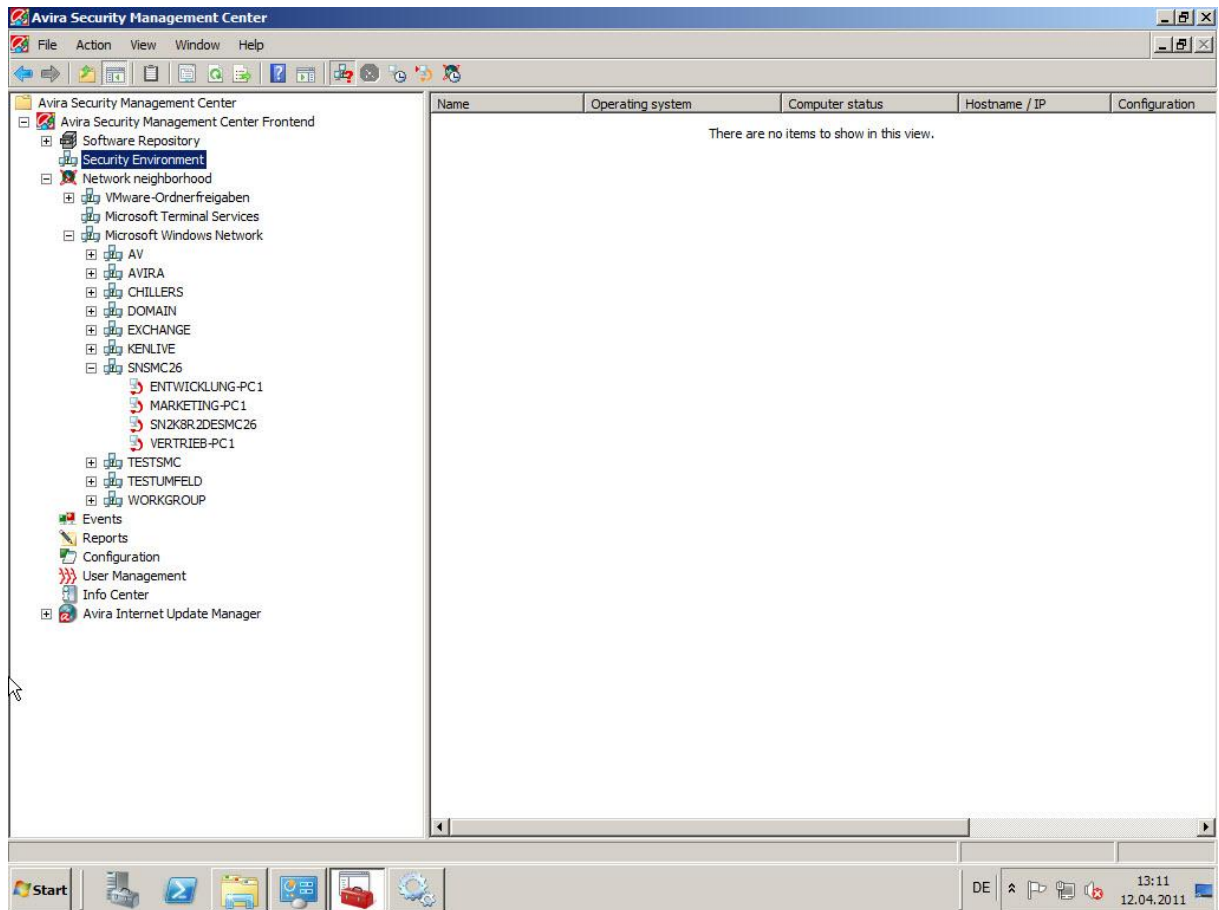
### Note:

If manually created clients already exist within the security environment, they will be automatically rejected and deleted from the security environment with the options **"create groups based on 'organizational units'"**

All manually created clients will be maintained with the option **"Ignore ADS hierarchy"** and the Active Directory will be imported with a flat structure.

Example using the import function **Active Directory -> create groups based on 'organizational units'" and automated product installation:**

Within a domain *SNSMC26.local* " there are clients located in one organization unit each, called "MARKETING, SALES, DEVELOPMENT" and "Domain Controllers".



This domain structure should be imported into the security environment and after the import of the clients there should be an automatic product installation.

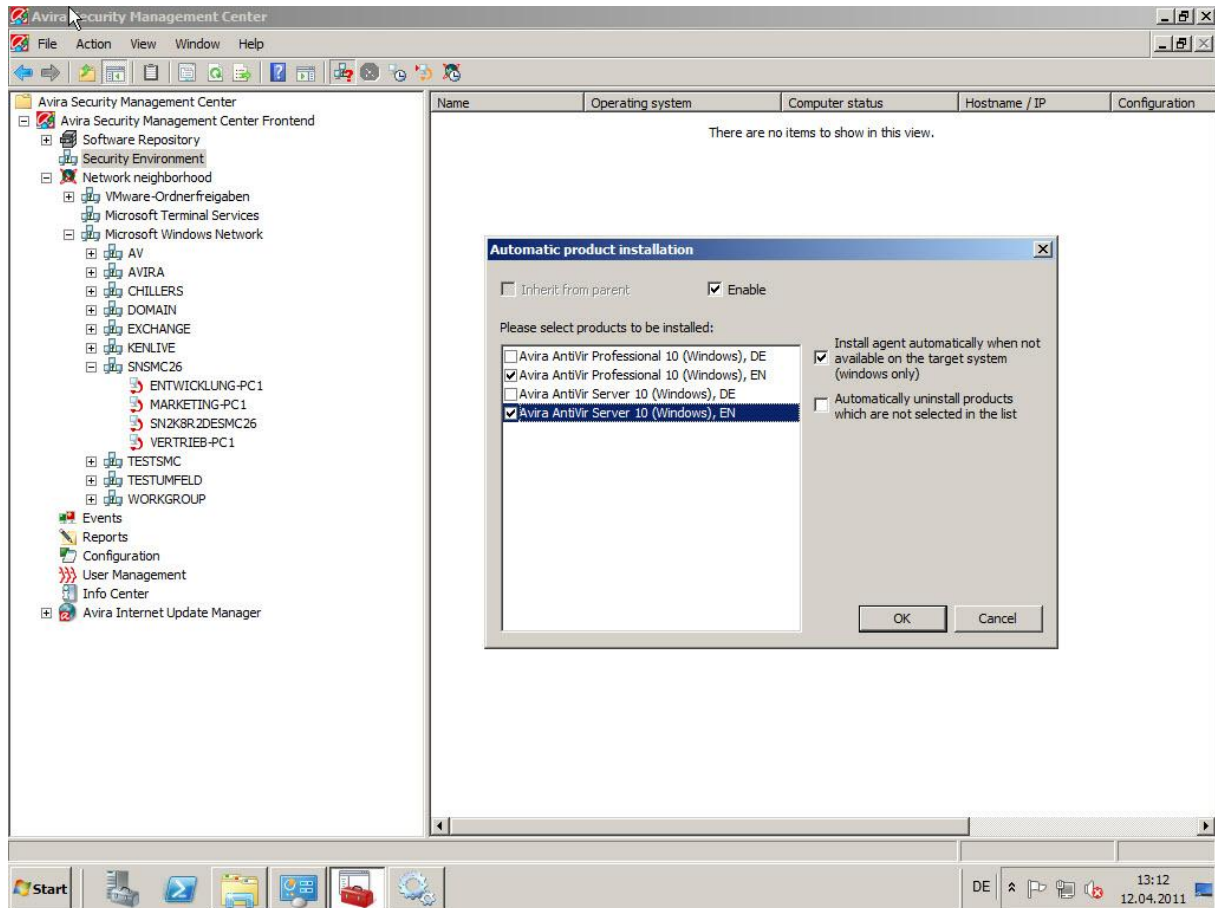
Requirements for automatic product installation:

- Valid SMC-license has been loaded
- Software packages + valid license have been loaded

## Step 1:

First, the automatic product installation needs to be activated.

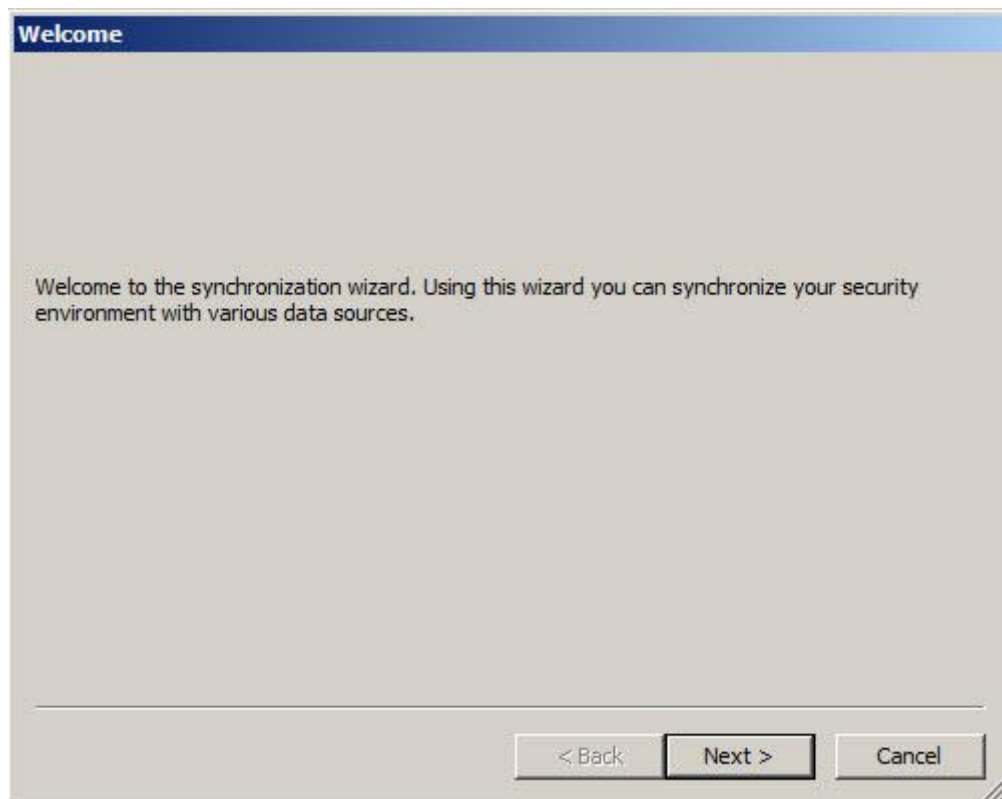
Right click on *Security Environment* -> *Installation* -> *Products*



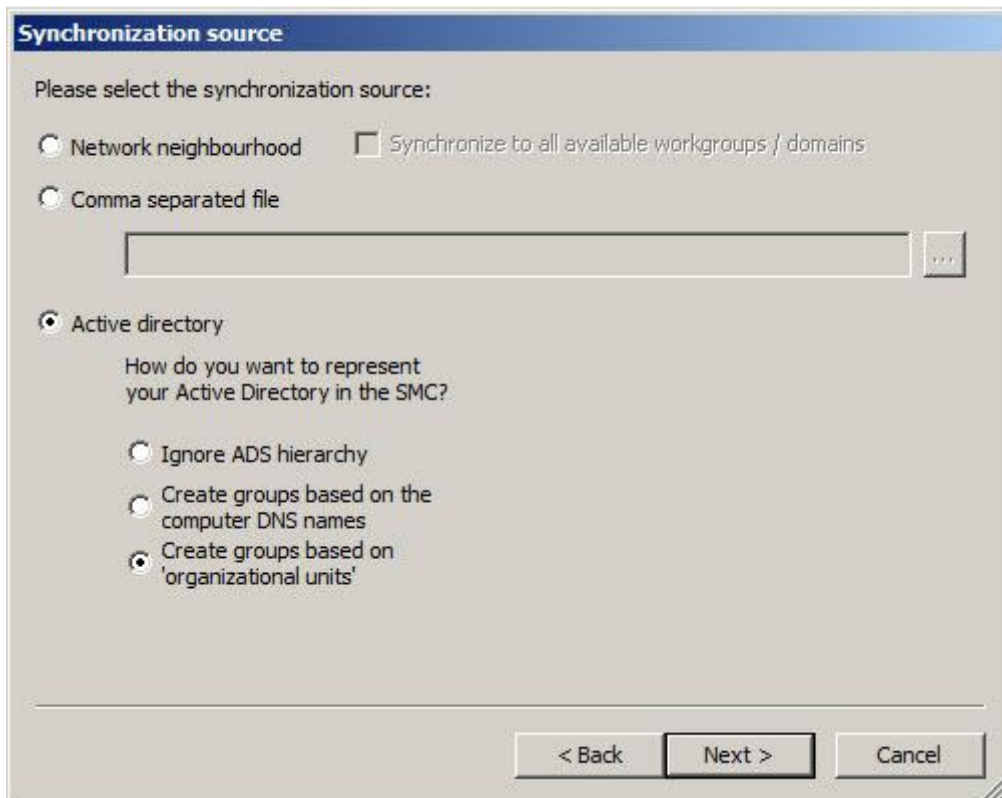
When this feature is enabled, you can start the Active Directory import.

**Step 2:**

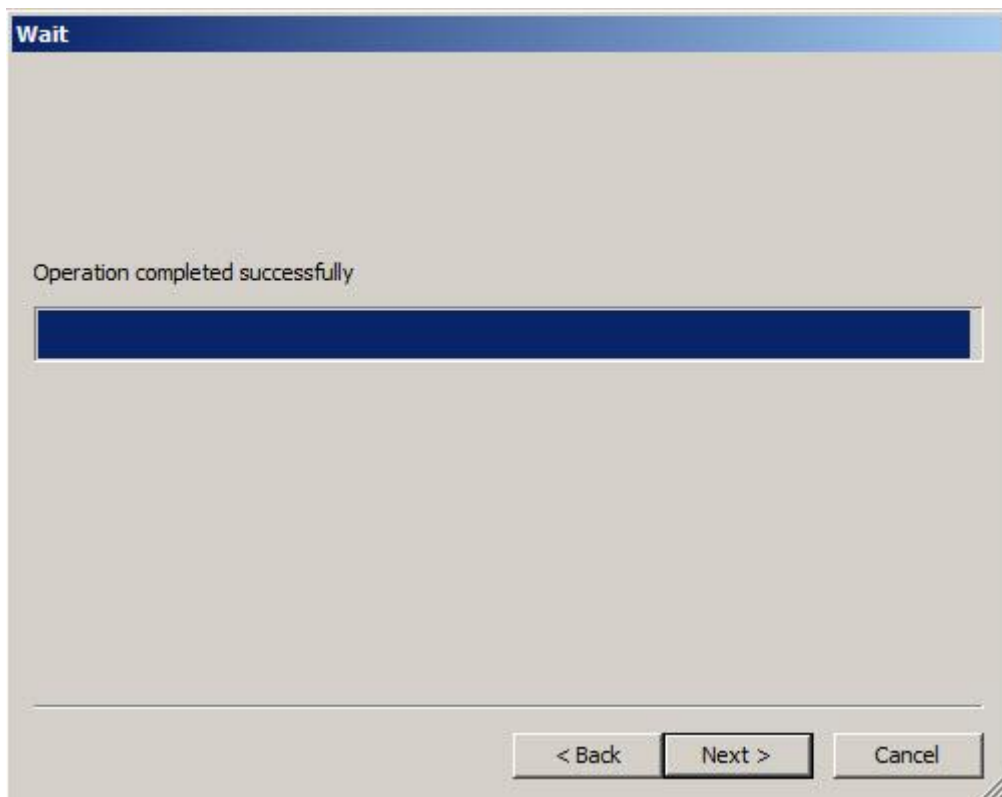
You can navigate to this function with a right click on *Security environment --> Synchronize --> Synchronize.*



Click *Next>*

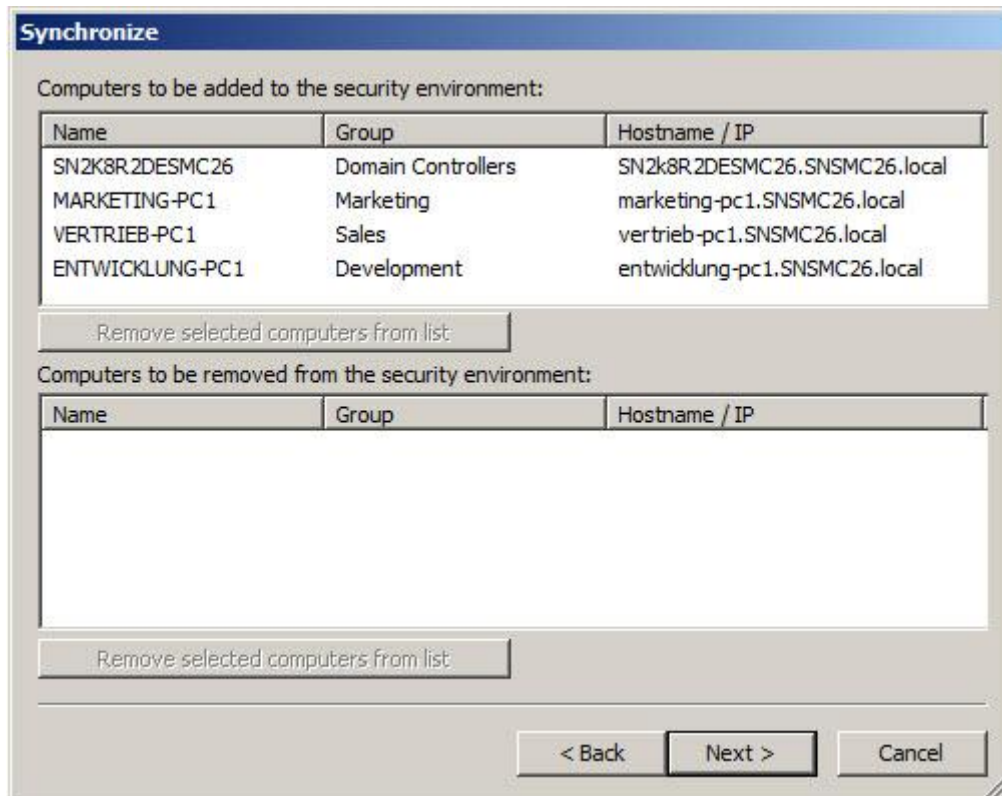


Click *Next*>



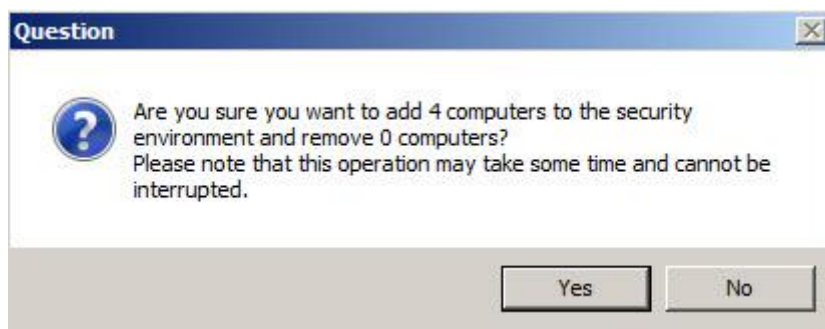
Click *Next*>

Now the analysis will show what clients have been found within the Active Directory among the different organization units.



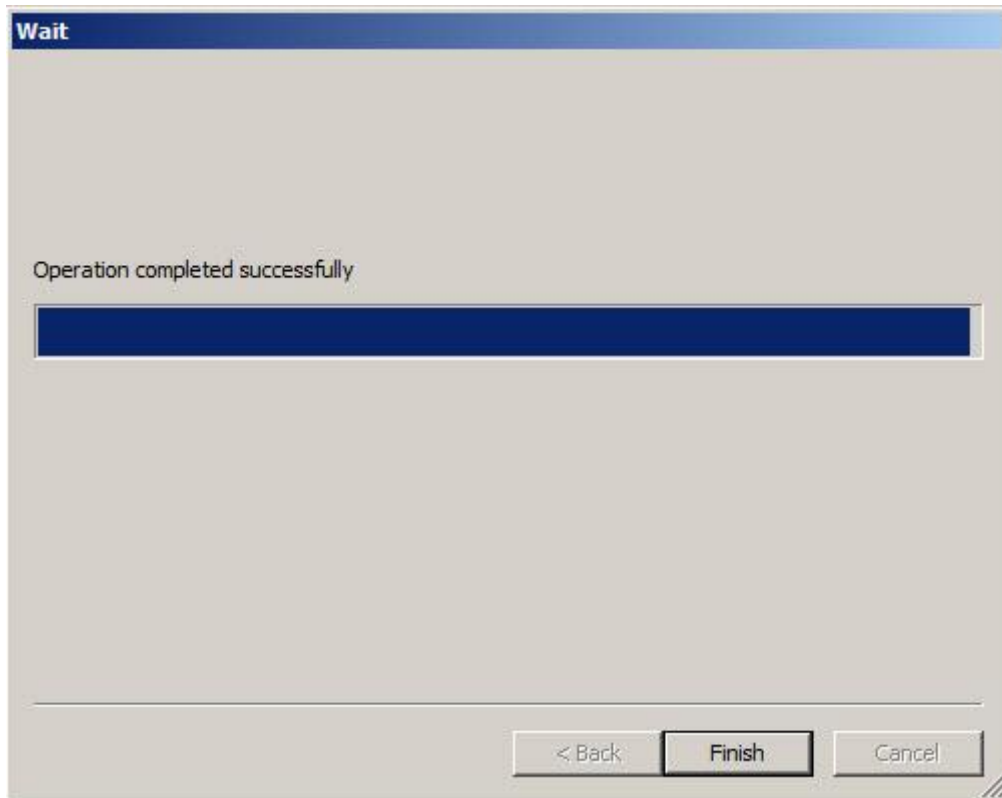
If an element is not desired, you can simply select it and remove it with the *delete* key.

By clicking on *Next>* all PCs are now imported into the security environment looking like this:



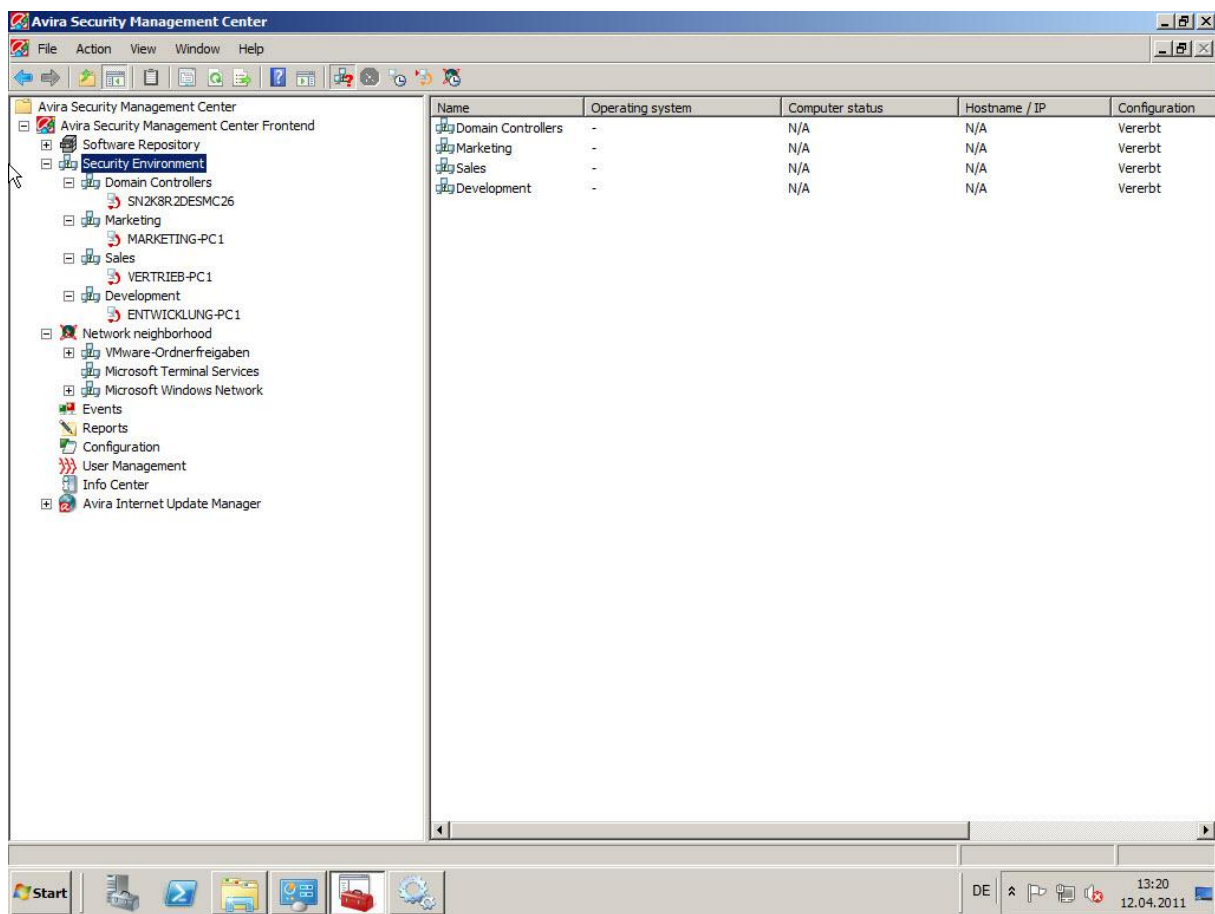
Click on *Yes*







Click *Next*>

The security environment now looks like this:



After a few minutes, all computers with the status  should change to the status  and it should be apparent that this was a successful automatic software installation.

Avira Security Management Center

File Action View Window Help

Avira Security Management Center Frontend

Software Repository

Security Environment

- Domain Controllers
  - SN2K8R2DESMC26
    - Avira SMC Agent
    - Avira AntiVir Server 10 (Windows), EN
- Marketing
  - MARKETING-PC1
    - Avira SMC Agent
    - Avira AntiVir Professional 10 (Windows), EN
- Sales
  - VERTRIEB-PC1
    - Avira SMC Agent
    - Avira AntiVir Professional 10 (Windows), EN
- Development
  - ENTWICKLUNG-PC1
    - Avira SMC Agent
    - Avira AntiVir Professional 10 (Windows), EN
- Network neighborhood
  - VMware-Ordnerfreigaben
  - Microsoft Terminal Services
  - Microsoft Windows Network
  - Events
  - Reports
  - Configuration
  - User Management
  - Info Center
  - Avira Internet Update Manager

Name	Operating system	Computer status	Hostname / IP	Configura
Domain Controllers	-	N/A	N/A	Vererbt
Marketing	-	N/A	N/A	Vererbt
Sales	-	N/A	N/A	Vererbt
Development	-	N/A	N/A	Vererbt

Start

DE 13:33 12.04.2011