

Avira SPACE

HowTo

Table of Contents

| | |
|----------------------------|---|
| 1. What is SPACE? | 3 |
| 2. Quarantine folder | 5 |
| 3. Notification | 6 |
| 4. Update of SPACE | 7 |

1. What is SPACE?

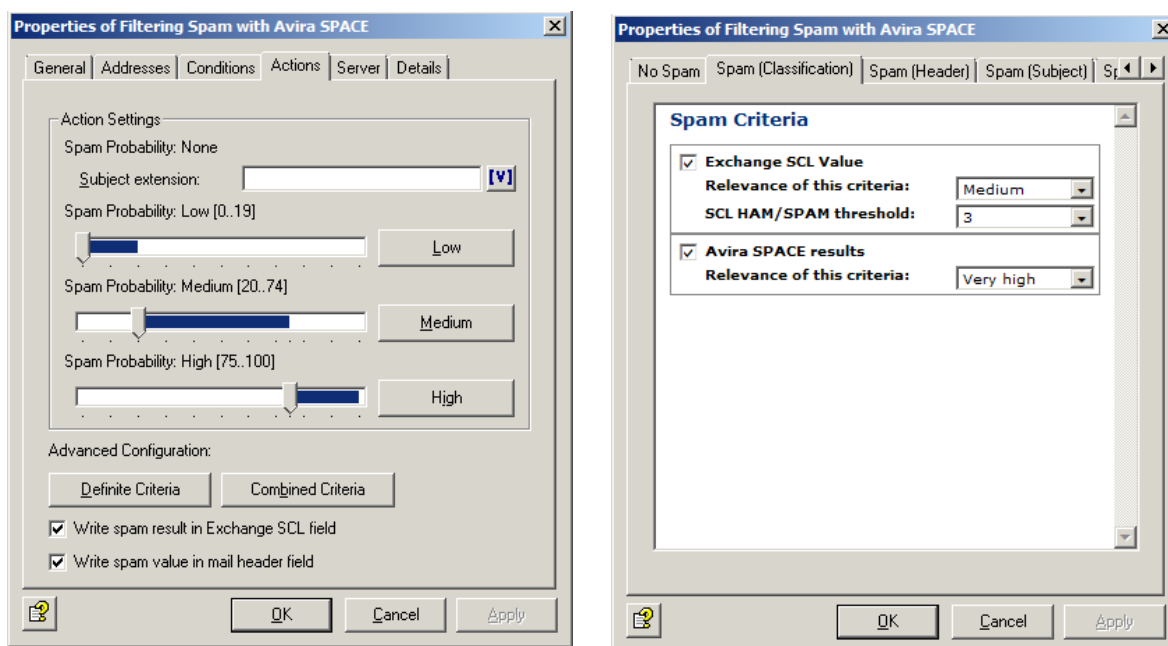
SPACE: Spam and Phishing Advanced Crossform Engine.

SPACE is an interface, which is used for the detection of spam and phishing Emails.

SPACE is part of the job “Advanced Spam Filtering”.

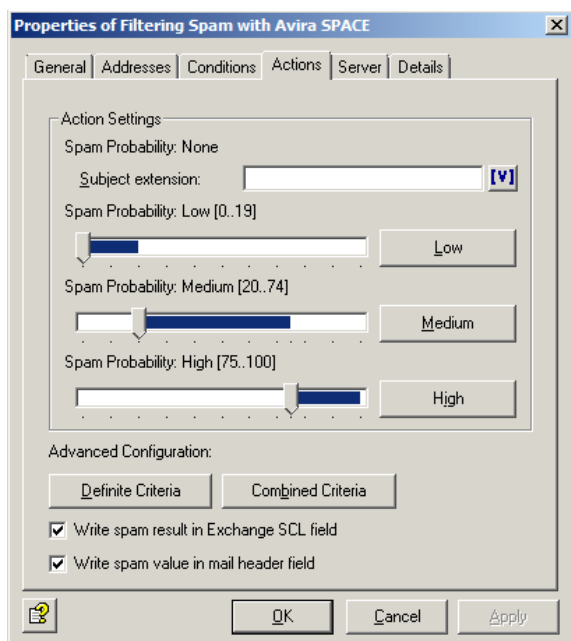
The SPACE engine uses the information from a local data base and different RBL DNS server (real time black lists) for the analysis of Emails. The data base is updated periodically.

SPACE is activated and deactivated via the job “Advanced Spam Filtering”. The option SPACE can be activated via the “Combined Criteria” and “Spam (Classification)”.



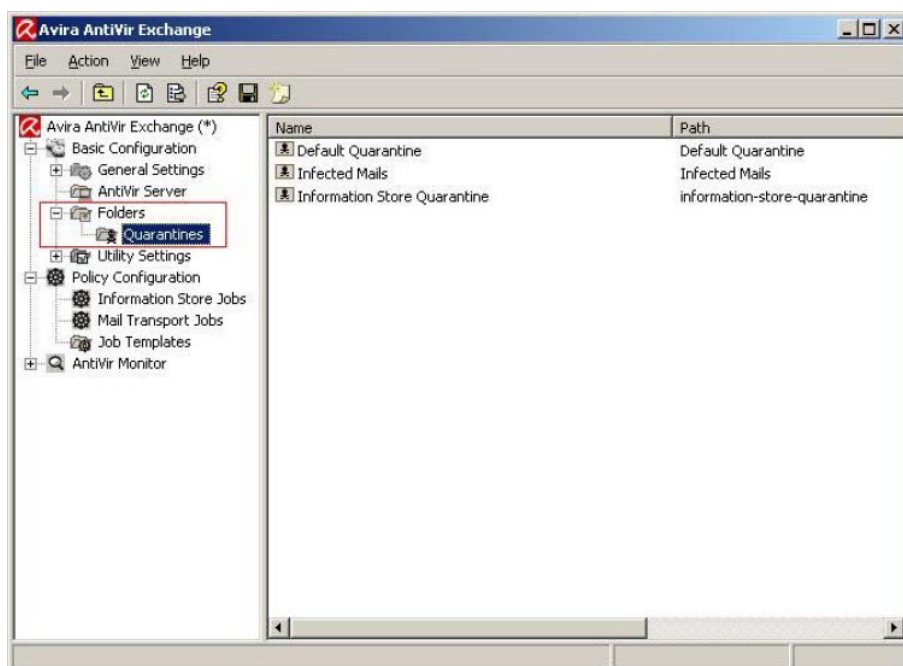
Here, the SPACE module is activated or deactivated. In case SPACE is deactivated, the corresponding mail jobs have to be activated.

The „Advanced Spam Filtering“ offers different detection levels: low, medium and high.



We recommend you to keep these settings also for the quarantine folders. By this means, the Email that has been declared as spam, will not be moved in only one default quarantine all together.

With only one standard quarantine folder, you do not have a good overview. But first, you have to create the different quarantine folders.



2. Quarantine folder

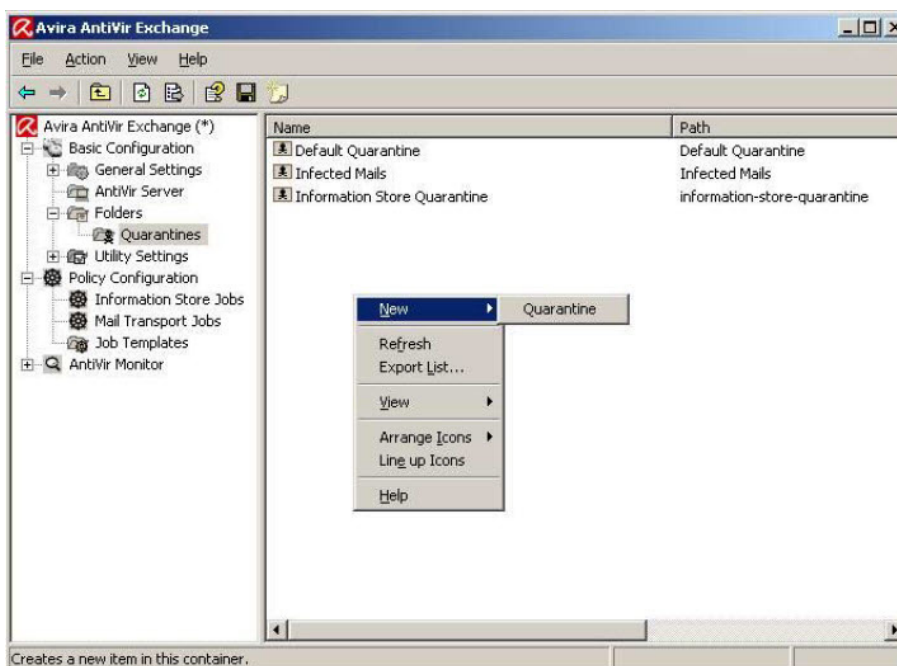
These folders are created via the option “Basic configuration” and “folder” in the quarantine menu. You open the quarantine by a simple mouse click.

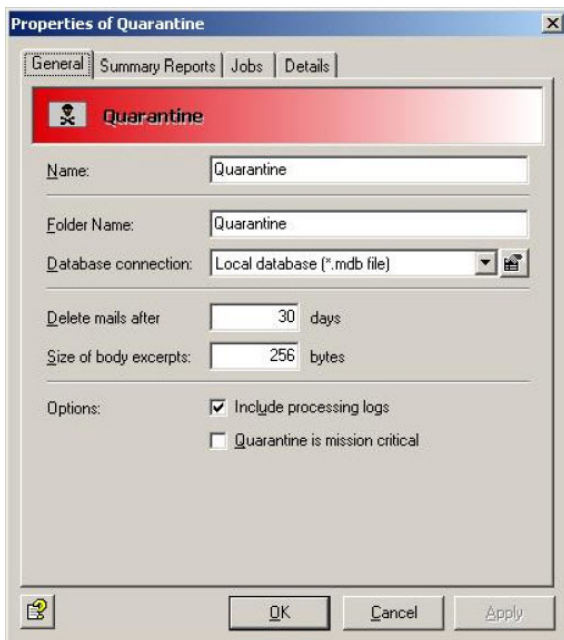
The default folders are:

- Default quarantine
- Infected Emails
- Information store quarantine

In order to create a new folder, go to the free space of the window and click with the left mouse button. A pull down menu appears. Here you can choose “New” and “Quarantine”.

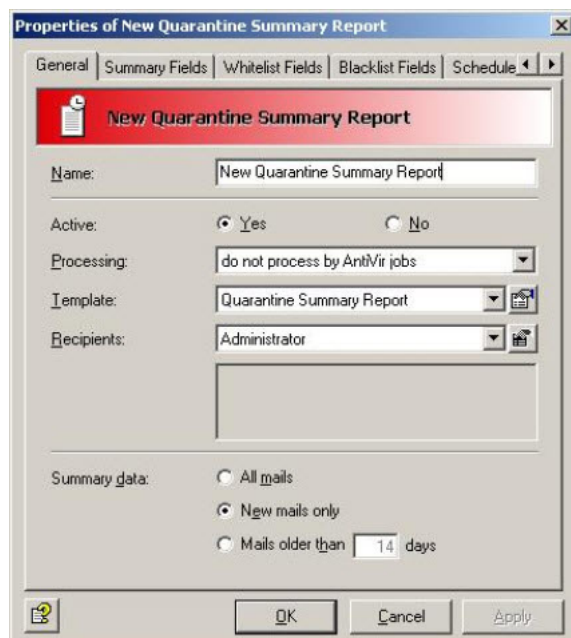
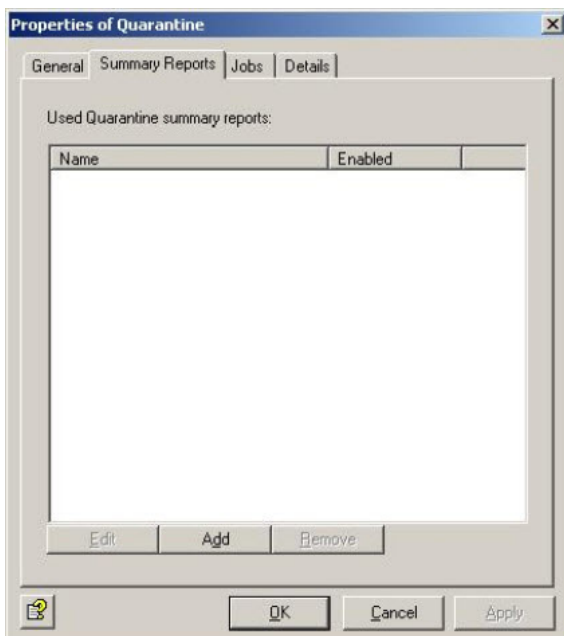
A new window opens. We recommend you to name the quarantine folders just like the different levels.

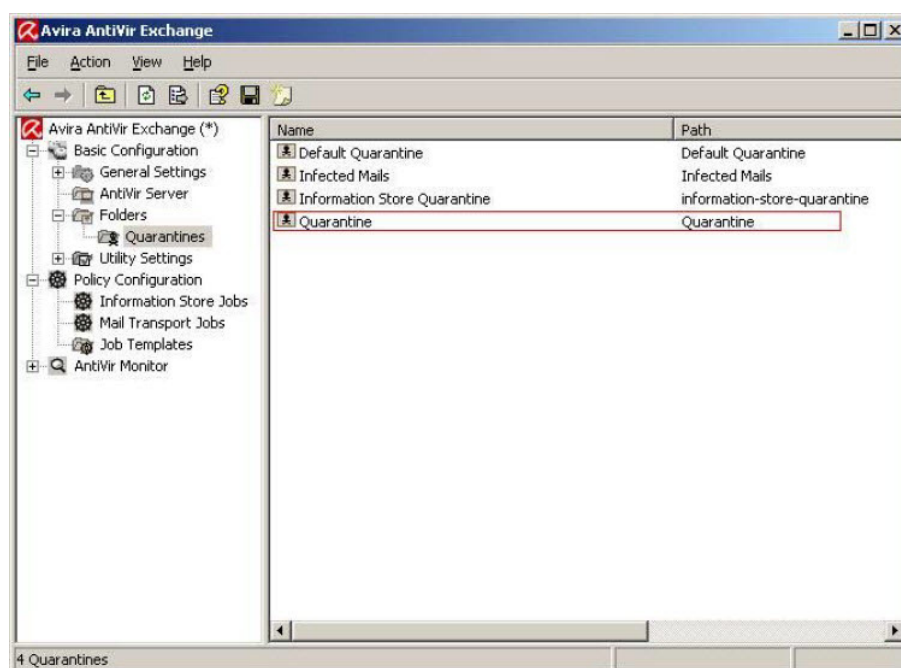




3. Notification

You can create the summary reports in this register:





The other quarantine folders are created in this order.

4. Update of SPACE

SPACE cannot update itself at the moment. The files have to be changed manually. An update usually happens every two months or in case of significant false positives.

The following files are part of the update:

- Antispam.dll
- Global_words.db
- Settings.db

These files are available on the following knowledge base [link](#).

Procedure:

After the download of the files, the service “AntiVir for Exchange” is stopped. Then the files are copied to the directory:

C:\Programs\Avira\AntiVir Exchange\ Bin\SPACE

or to

C:\Program Files\Avira\AntiVir Exchange\Bin\SPACE

Then, the service „AntiVir for Exchange“ will be restarted. Please read the knowledge base article above.

This manual was created with great care. However, errors in design and contents cannot be excluded. The reproduction of this publication or parts thereof in any form is prohibited without previous written consent from Avira Operations GmbH & Co. KG. Errors and technical subject to change.

Issued Q1-2013

AntiVir® is a registered trademark of the Avira Holding GmbH.
All other brand and product names are trademarks or registered trademarks of their respective owners. Protected trademarks are not marked as such in this manual. However, this does not mean that they may be used freely.



live free.™