



# Avira

Avira Endpoint Security

## HowTo





## Table of contents

<b>1. Introduction .....</b>	<b>3</b>
<b>2. Product Information .....</b>	<b>3</b>
2.1 Operation mode .....	3
2.2 Scope of services.....	3
2.3 Optimum protection. Fast updates. Efficient administration.....	3
2.4 System requirements .....	5
<b>3. Installation of Avira Endpoint .....</b>	<b>5</b>
3.1 Pre-requisites for an installation.....	5
3.2 Perform installation.....	6
<b>4. Avira Endpoint Security - Configuration Wizard .....</b>	<b>8</b>

---

## 1. Introduction

This quick guide contains all the information you need to install the Avira Endpoint Security. Further information about the individual components is given in the corresponding manuals.

On our [Avira website](#), you can download these manuals as a PDF file, update Avira Endpoint Security or obtain information on other security solutions of Avira GmbH. Our website also contains information on how to obtain fast and professional help from our support team and on our newsletter that you can subscribe to there.

---

## 2. Product Information

### 2.1 Operation mode

The Avira Endpoint Security is the ideal security solution for businesses with up to 100 computers. In addition to your PCs and servers, it also provides optimum protection for your Email and Internet communication. And it's all very easy because Avira Endpoint Security is quickly installed, configured and - thanks to the administration function - easy to manage. Hence, all PCs can be centrally monitored and conveniently updated at any time in case there are software updates available.

### 2.2 Scope of services

Avira Endpoint Security includes the products listed below.

By clicking on the product names you will be forwarded to our Avira homepage where you will find more information regarding each product.

- [Avira Management Console](#)
- [Avira Server Security \(Windows\)](#)
- [Avira Professional Security \(Windows\)](#)
- [Avira Update Manager](#)

### 2.3 Optimum protection. Fast updates. Efficient administration

The Avira Endpoint Security makes your network a safe business. The products of this bundle offer the following advantages.

- Professional security package for small networks and ideal supplement for businesses that use the Microsoft SmallBusiness Server
- Leading detection and elimination of viruses, worms, Trojans, adware, spyware and other malware
- Innovative AHeAD (Advanced Heuristic Analysis and Detection) technology for the detection of unknown or rapidly changing attackers for proactive security
- Avira Rootkit Detection (protection against processes that manipulate systems) including repair function
- Real-time monitoring of all file accesses with integrated on-access scanner and on-demand scanner for manual and scheduled scans
- Archive detection with selection of archive types to be scanned and adjustable recursion depth or scanning of run-time packed files in real time
- Scanning of Email traffic for infectious contents directly at the client, checking of every incoming and outgoing or internally sent Email in real time
- Real-time monitoring of the Internet data traffic (incoming, outgoing), monitoring of HTTP and FTP connections
- Quarantine for safe isolation of infected and suspicious files
- Simple installation and configuration of the security environment to be protected via the Avira Endpoint Security Suite Configuration Assistant
- Individual configuration up to user level
- Permanent checking of the product and module status – irregularities or deviations from the intended status are immediately reported
- Central control of searches and updates as well as network-wide administration by the Avira Management Console (AMC)
- Planning and automation of routine tasks such as searches and updates for the entire security environment
- Event Manager for direct monitoring of current system security
- Comprehensive messaging and reporting functions with freely definable rules
- Precisely adjustable user administration including password and general or group based assignment of rights

- SSL-encrypted connections between the AMC and managed clients
- Extremely small updates of detection pattern databases and programs that save bandwidth
- Automated updates via Internet or network-wide distribution

## 2.4 System requirements

The following requirements must be met so that Avira Endpoint Security can run without problems:

- **Processor:** Pentium or later, at least 1 GHz
- **RAM:** 64 MB in addition to the RAM recommended by Exchange
- **Hard drive:** 400 MB minimum for the installation
- **Operating System (PC):** Windows XP SP3 or later
- **Operating System (Server):**
  - Windows Small Business Server 2011 Standard, 64-bit
  - Windows Small Business Server 2008, 64-bit
  - Windows Server 2008 (32 Bit or 64 Bit) SP2; Exchange 2007 (64 Bit) SP1 and "Update Rollup 4 for Exchange 2007 SP1" and Exchange 2010 (with the newest service pack and patches)
  - Windows Server 2008 R2 (64 Bit) or higher; Exchange 2007 (64 Bit) SP1 and "Update Rollup 4 for Exchange 2007 SP1" and Exchange 2010 (with the newest service pack and patches)
- Microsoft.NET, version 3.5
- Internet connection (possibly behind a proxy server)

---

## 3. Installation of Avira Endpoint

### 3.1 Pre-requisites for an installation

Please make sure that the following conditions are met so that Avira Endpoint Security can work correctly on your server:

- System requirements
- Administrator rights available
- A license file is available

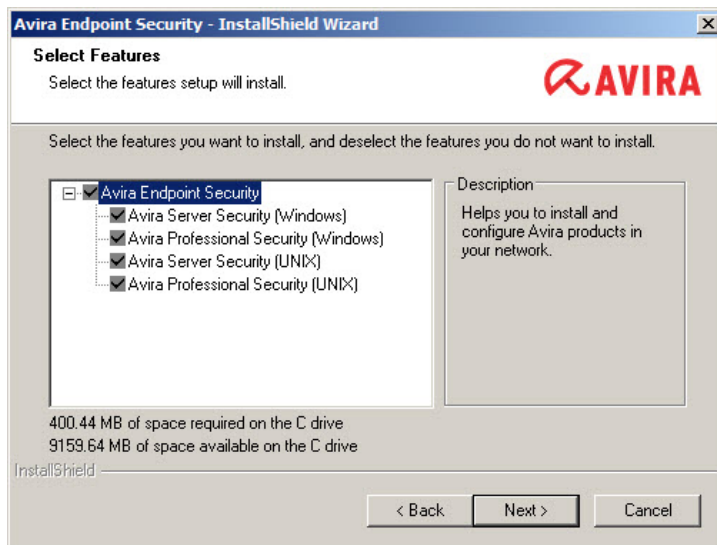


## Note

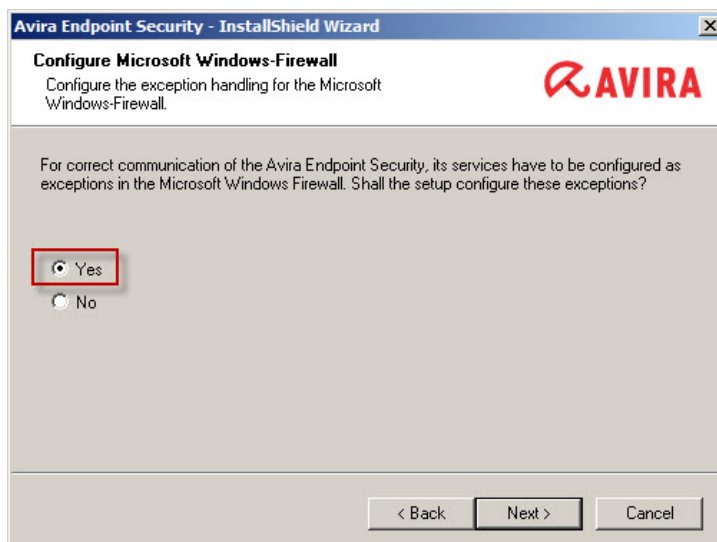
The installer for that package can be executed only on server systems.

## 3.2 Perform installation

- [Download](#) and save the installation file from the Avira homepage
- Double click the downloaded *avira\_endpoint\_security\_en.exe* file
- Click on **Next** in the welcome dialog of the InstallShield Wizard
- In the next dialog box, please read the EULA, accept the license agreement and click **Next**
- The dialog window „Select License Key“ appears. Click on **Browse** and choose the directory where you have stored the license file. Now confirm your selection with **Next**
- The dialog window „Choose destination location“ appears
  - Confirm the given destination with **Next**
  - - OR -
  - Select a different destination directory by clicking **Browse** and confirm it with **Next**
- The dialog box “Select Features” offers the opportunity to select the available products from the Avira Endpoint Security bundle which should be installed
  - **Avira Endpoint Security:** Helps you to install and configure Avira products in your network
    - **Avira Server Security:** Protects your Windows servers
    - **Avira Professional Security:** Protects your Windows workstations
    - **Avira Server Security (UNIX):** Protects your Unix servers
    - **Avira Professional Security (UNIX):** Protects your Unix workstations



- Click on **Next** to add the checked features to Avira Endpoint Security
- The dialog window “Administrative user account” appears. Enter a user account with administrator rights and the associated password and click on **Next**
- Specify the network adapter in your network you want to use to manage with your Avira Endpoint Security
- Make sure to select „Yes“ in the next dialog concerning the configuration of the Microsoft Windows-Firewall. This is necessary for correct communications of Avira Endpoint Security clients and servers. Click on **Next**



- In the next dialog window “Ready to Install”, click on **Install**. The individual components of the Avira Endpoint Security will be installed

**Note**

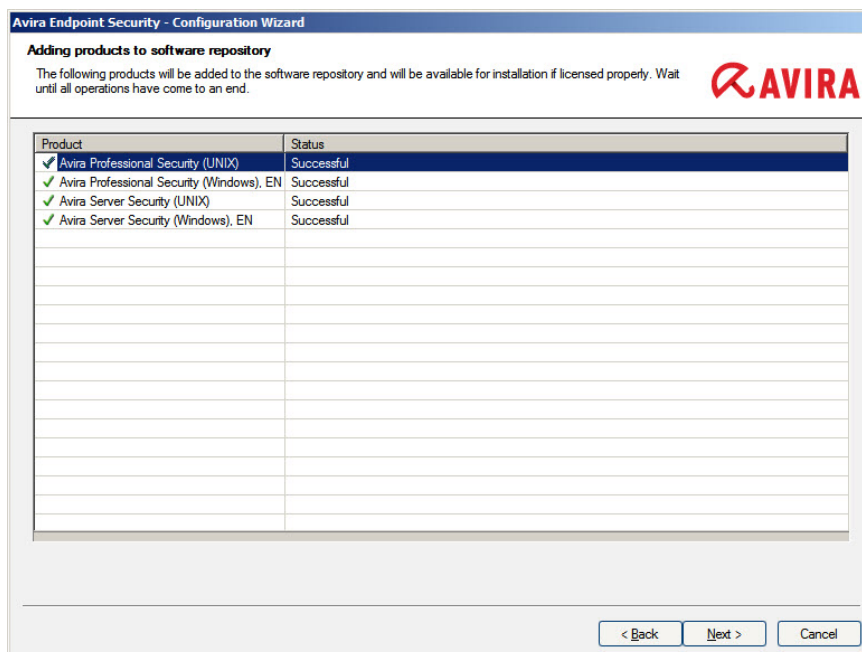
The setup wizard will open in your Windows-Firewall all necessary ports which will be required by the installed services.

- After a successful installation you will see the message „InstallShield Wizard complete“. Click on **Finish** to close the setup.

## 4. Avira Endpoint Security - Configuration Wizard

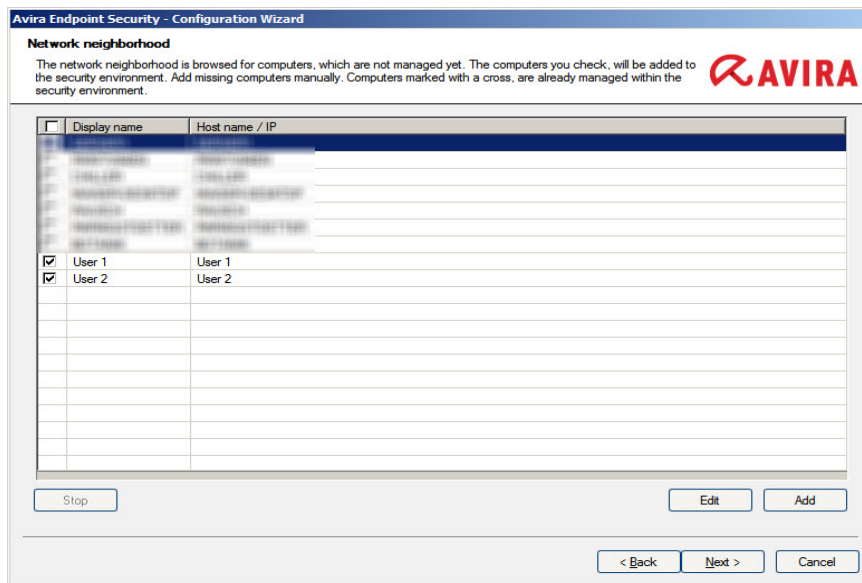
After the completion of the InstallShield Wizard, the Avira Endpoint Security Configuration Wizard starts. This wizard guides you through the configuration process of the Avira Endpoint Security.

- The welcome screen of the Configuration Wizard will appear. Click on **Next**
- The products will be added to the software packages in the next window. If it was successful, you should see green checkmarks in front of the product names. However, if this is not the case, please contact the Avira [support](#)



- The network neighborhood will be scanned for clients and servers after a click on **Next**
- Ticked computers are already managed within the security environment





- Select the computers that you want to add to your security environment. Enter your central administrative user account including the password. Confirm your information with **Next**
- Your administrative user account will then be verified on the selected computers. The green checkmarks in front of the names indicate whether the account is valid on the respective computer. Change the account data as needed by clicking the corresponding field and press **Check** to validate. Click on **Next**
- The computers will now be added to the security environment. The green checkmarks will indicate here as well whether this was successful. Click on **Next**
- On the next screen you will see the installable products. Select the desired Avira product and confirm your selection with **Next**
- Then, select the computers where you would like to install the products by checking the corresponding boxes. Confirm your selection with **Next**
- The successful installation will be indicated with the green checkmarks in front of the computer names and the status „Successful“. If this is not the case, please contact our support. Click on **Next**
- Complete the installation in the “Summary” window by clicking on **Finish**

Various settings can be configured subsequently:

- Install several products for your security environment
- Add computers that are available in the network but are not yet in the security environment

- Install the available products on selected computers...

If you do not see other computers in your network, you might have to start the service “Computer Browser”. If it is not activated, click on **Start** and then select *Administrative Tools > Services*. Double-click on the service **Computer Browser** and change the Startup type to “Automatic”. Confirm it with **OK** and click on **Start**.

Furthermore you have to ensure network discovery is enabled for each computer under *Control Panel > Network and Internet > Network and Sharing Center > Advanced sharing settings*.

**Note**

You can start the Avira Endpoint Security configuration wizard at any time. Therefore, go to *Start > All Programs > Avira* and optimize or change the settings.

